

Federal Government Legislation for the “Promotion of Public Utilization of Specific Large-Scale Advanced Research Facilities”

- ☞ Designates “Specific Large-Scale Advanced Research Facilities” – Currently three major facilities
- ☞ Requires the appointment of a “Registered Institution for Facility Use Promotion” – An organization that is independent of the facility owner
- ☞ Secures the reliable operation of the facilities irrespective of the financial status of the owner



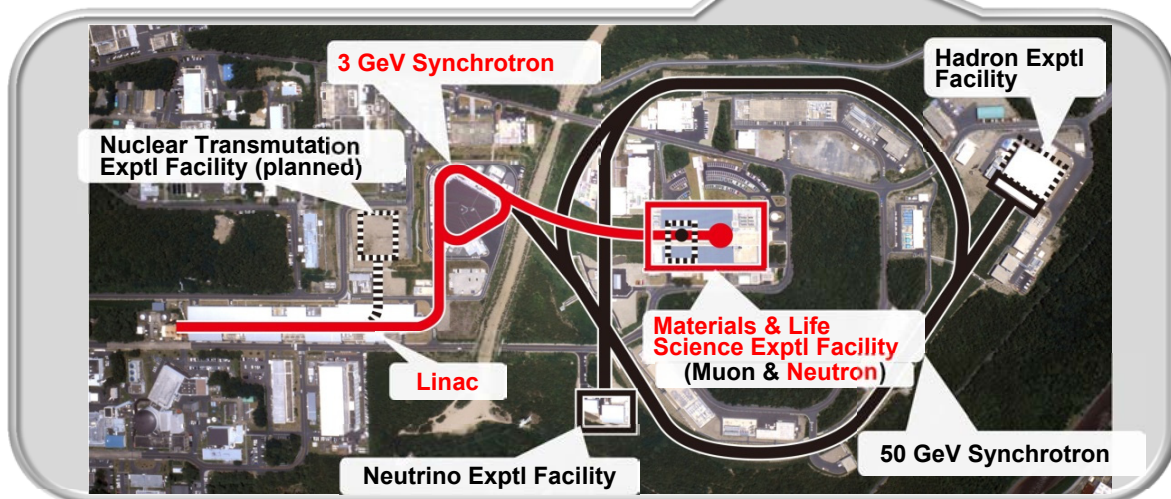
SPring-8 / SACLA



J-PARC MLF



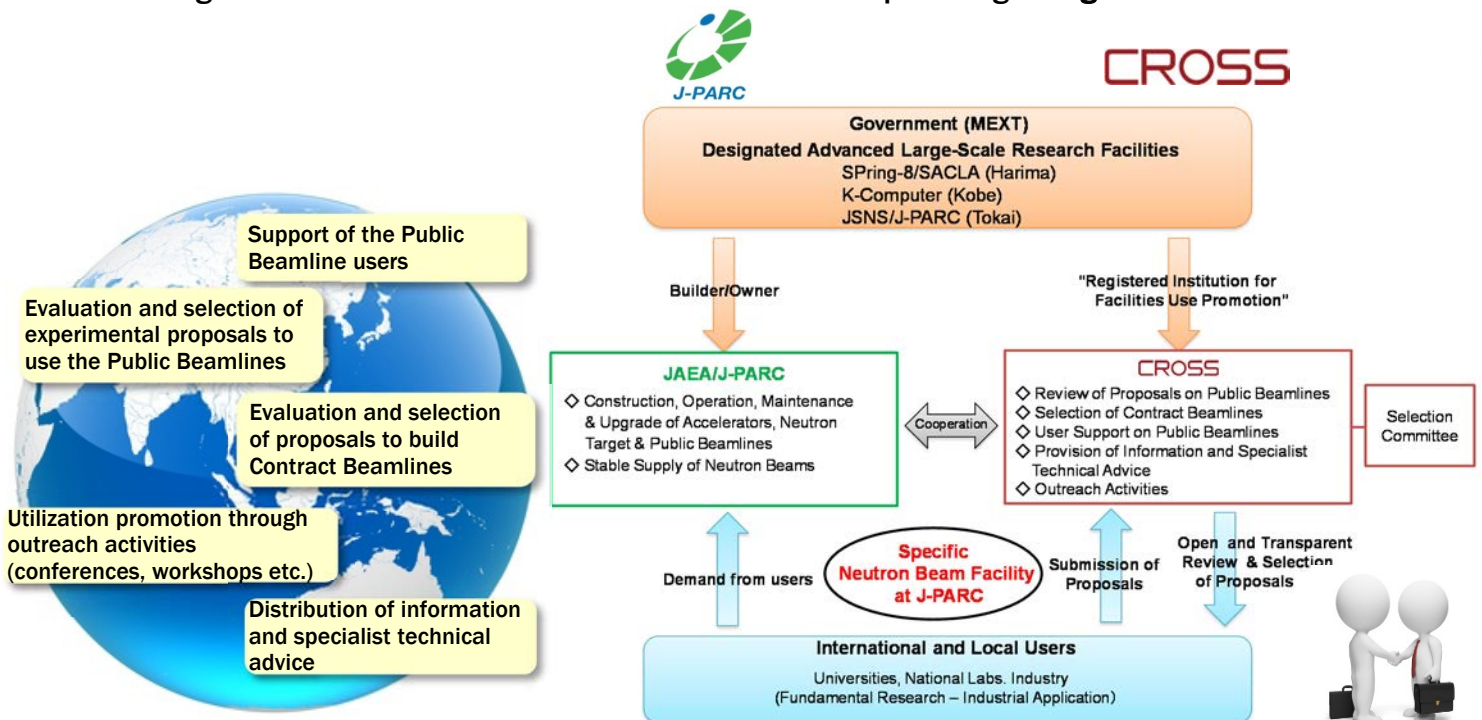
K-Computer (京)



The Designated Neutron Beam Facility at J-PARC

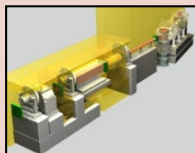
Owner : **JAEA**

Registered Institution : **CROSS-Tokai** → Mission: To providing “Usage Promotion Services”



BL17 SHARAKU 写楽

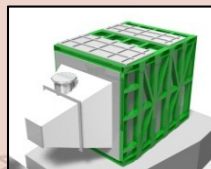
Vertical Sample Geometry Polarized Neutron Reflectometer
試料垂直型偏極中性子反射率計



Structural analysis of functional thin film materials, biological thin films and buried interfaces

BL15 TAIKAN 大観

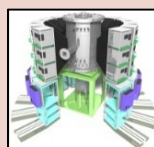
Small and Wide Angle Neutron Scattering Instrument
大強度型中性子小中角散乱装置



Nano and micro scale structural analysis of metals, magnetic materials, soft matter, proteins and their complexes

BL18 SENJU 千手

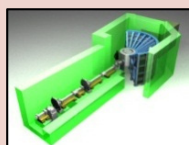
Extreme Environment Single Crystal Neutron Diffractometer
特殊環境微小単結晶中性子構造解析装置



Microcrystal and magnetic structure analysis of functional materials under extreme conditions

BL01 4SEASONS 四季

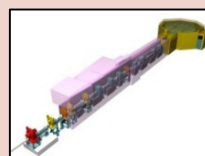
4D-Space Access Neutron Spectrometer
4次元空間中性子探査装置



Measurement of spin and lattice dynamics in condensed matter over a wide range of 4D momentum-energy space

BL02 DNA

Biomolecular Dynamics Spectrometer
ダイナミクス解析装置



Measurement of atomic and spin dynamics (magnetic materials) in biological macromolecules, soft matter and functional biomaterials